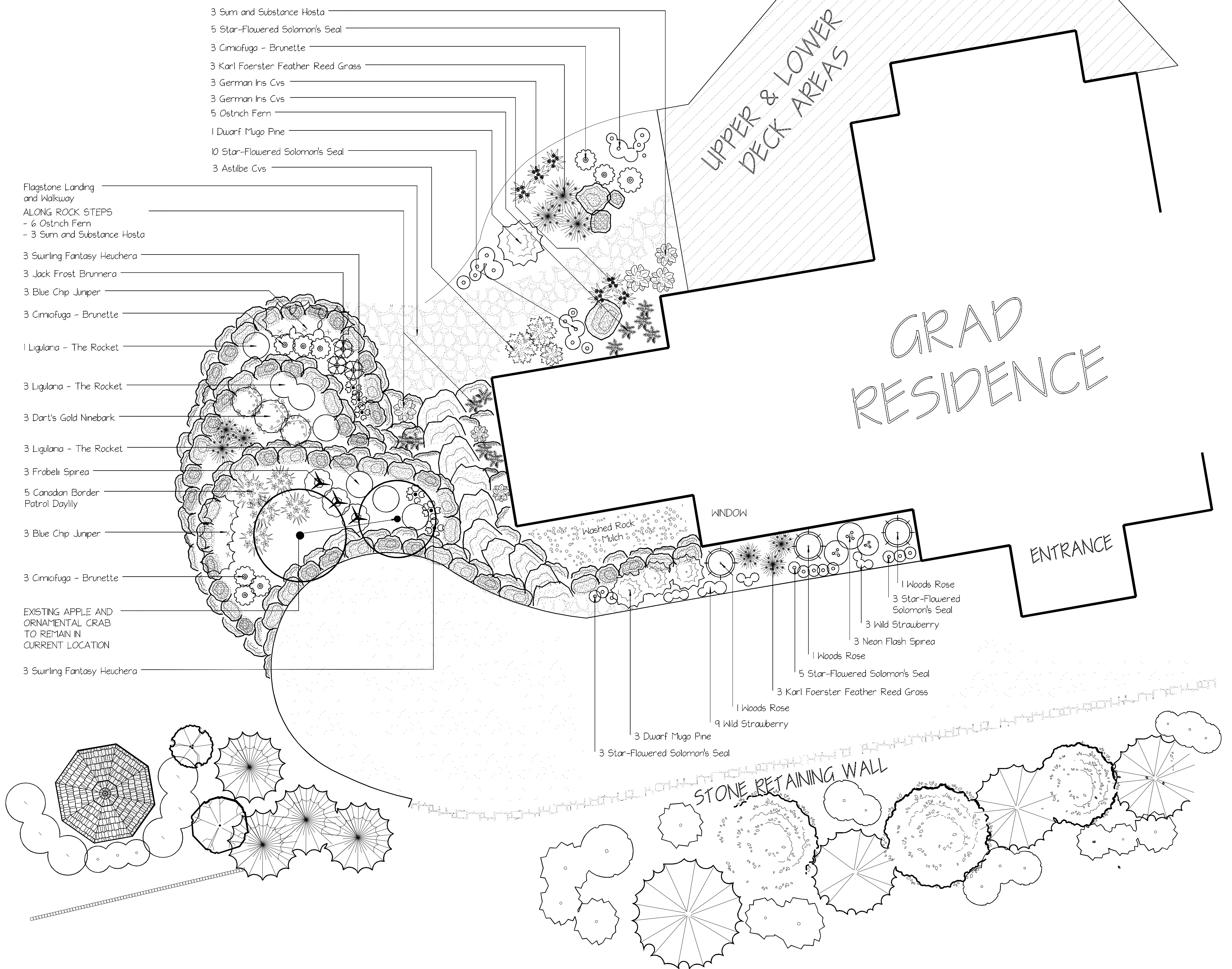
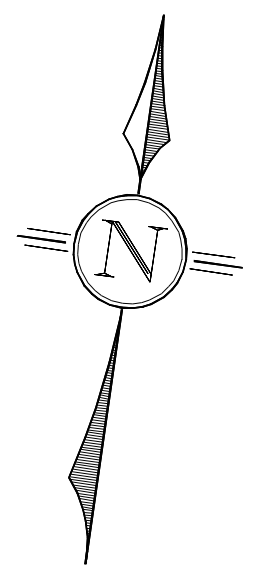


WEST RESIDENCE RETAINING WALL, PLANTER DETAIL and SOUTH ENTRANCE DETAIL LANDSCAPE PLAN



- 3 Sun and Substance Hosta
- 5 Star-Flowered Solomon's Seal
- 3 Cimicifuga - Brunette
- 3 Karl Foerster Feather Reed Grass
- 3 German Iris Cvs
- 3 German Iris Cvs
- 5 Ostrich Fern
- 1 Dwarf Mugo Pine
- 10 Star-Flowered Solomon's Seal
- 3 Astilbe Cvs

Flagstone Landing and Walkway
ALONG ROCK STEPS
- 6 Ostrich Fern
- 3 Sun and Substance Hosta

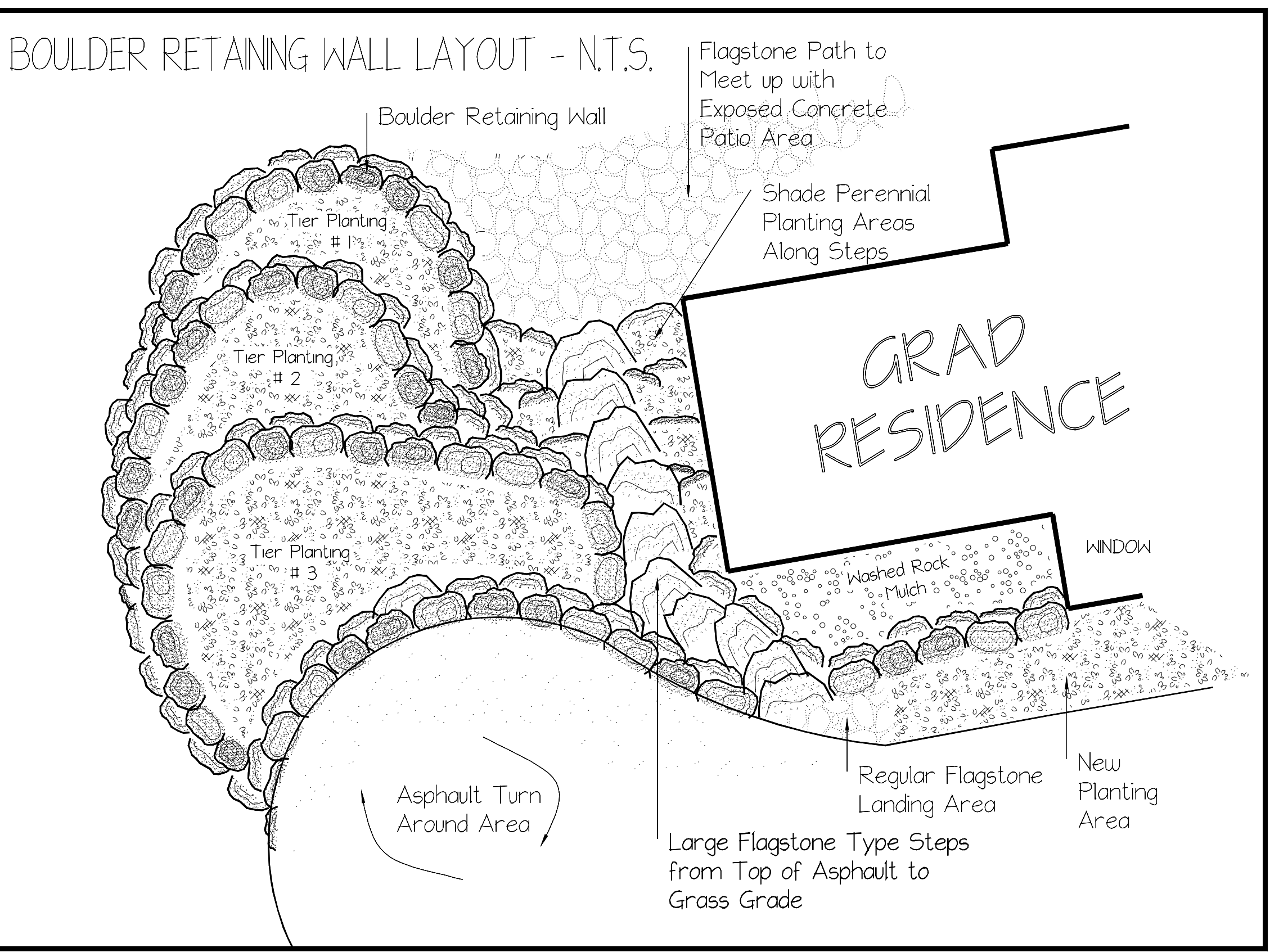
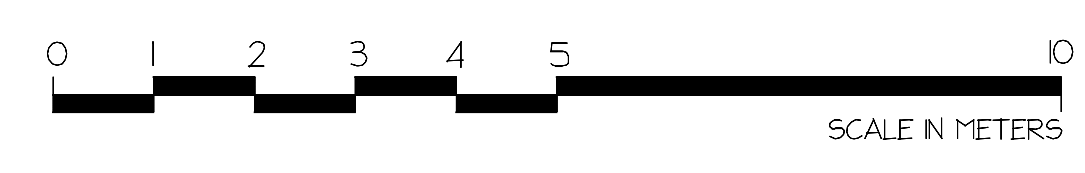
- 3 Surling Fantasy Heuchera
- 3 Jack Frost Brunnera
- 3 Blue Chip Juniper
- 3 Cimicifuga - Brunette
- 1 Ligularia - The Rocket
- 3 Ligularia - The Rocket
- 3 Dart's Gold Ninebark
- 3 Ligularia - The Rocket
- 3 Froebel's Spirea
- 5 Canadian Border Patrol Daylily
- 3 Blue Chip Juniper
- 3 Cimicifuga - Brunette
- EXISTING APPLE AND ORNAMENTAL CRAB TO REMAIN IN CURRENT LOCATION
- 3 Surling Fantasy Heuchera

GRAD RESIDENCE

WINDOW


ENTRANCE

STONE RETAINING WALL



GENERAL NOTES:

- All existing plant material in healthy condition prior to construction will be selected and saved, then moved to new locations seen suitable on the new proposed West side planting area for planting.
- All landscape installation is to conform and exceed all Landscape Industry Standards for both hardscaping and softscaping applications.
- All planting beds will consist of no less than 15 cm or 6" of Sunpine bark mulch to maintain adequate moisture levels and to suppress weeds.
- Any plant material listed in this and other designs from the For Trees Company Ltd. is subject to substitution based on customers' requests and product availability.

STAN & JANE		Box 10039, Stn Main Airdrie, AB T4A 0H4	 FOR TREES COMPANY LTD. <small>Trees for Life... Landscapes for Living Didsbury, Alberta 403-535-8965</small>
GRAD			
client:			date:
scale:	1 : 75	checked by:	GERARD FOURNIER
drawn by:	AMBERLY STROM		