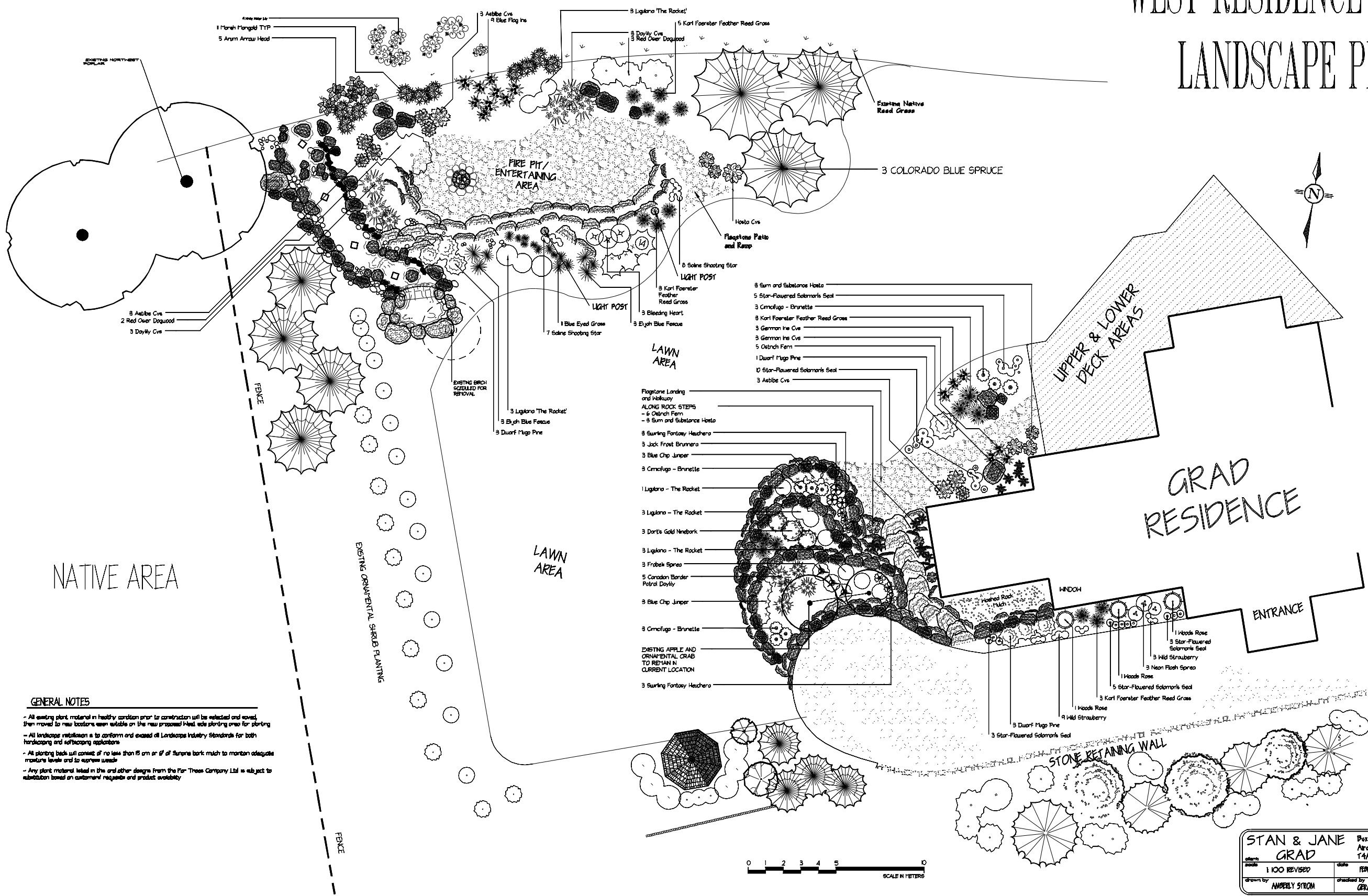
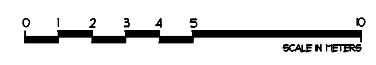


WEST RESIDENCE DETAIL LANDSCAPE PLAN



GENERAL NOTES

- All existing plant material in healthy condition prior to construction will be selected and saved, then moved to new locations when suitable on the new proposed final site planting area for planting.
- All landscape installation is to conform and exceed all Landscape Industry Standards for both landscaping and softscape applications.
- All planting beds will consist of no less than 15 cm or 6" of Supreme bark mulch to maintain adequate moisture levels and to suppress weeds.
- Any plant material listed in this and other designs from the Fair-Trees Company Ltd is subject to substitution based on customer requests and product availability.



STAN & JANE GRAD		P.O. Box 100399, 54th Main, Ardara, AB T4A 0H4	
scale: 1:100 REVISED	date: FEBRUARY 5, 2011	checked by: GERARD FOURNIER	
drawn by: AMBERLY STROM			