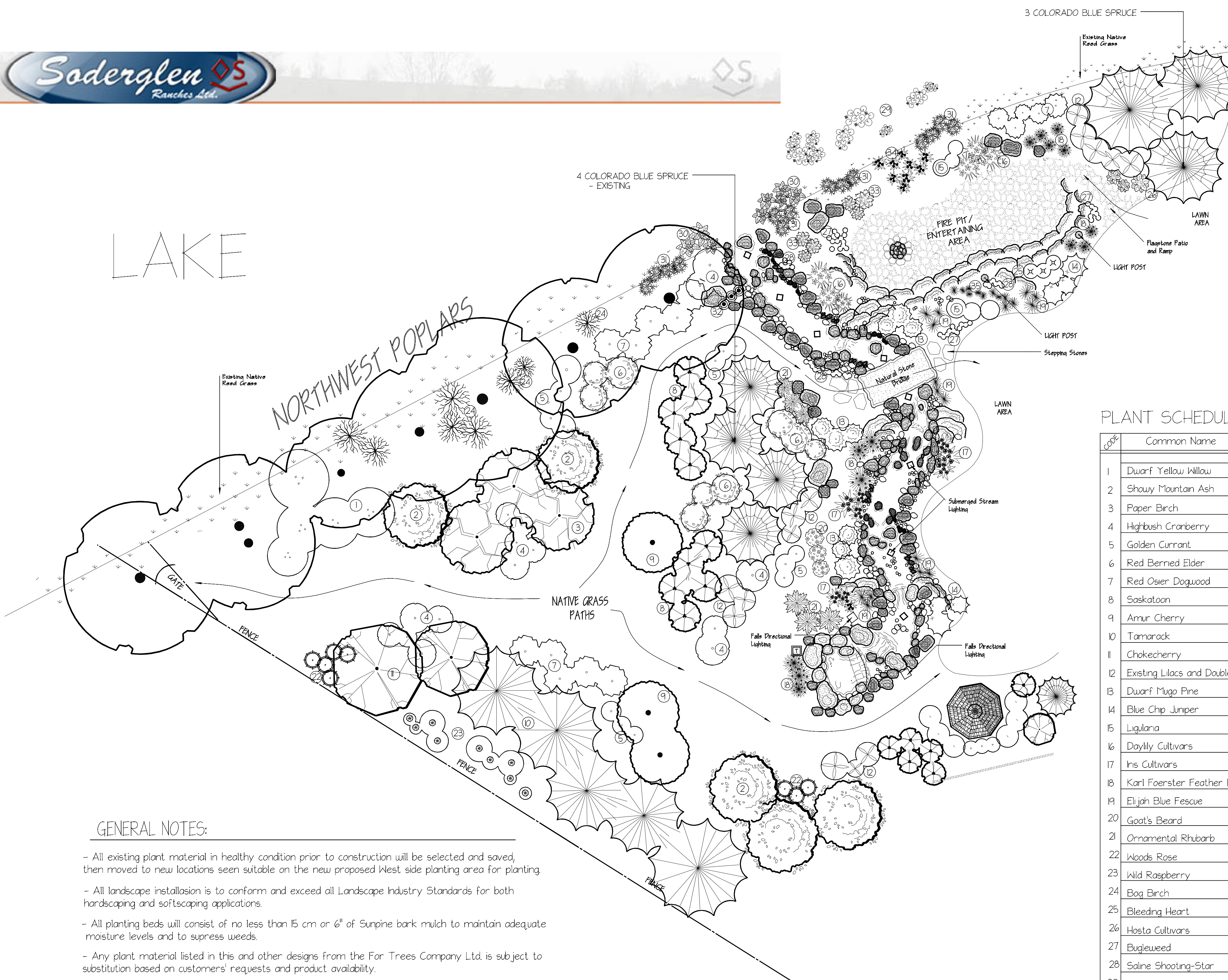


WEST RESIDENCE NATIVE FIELD and STREAM LANDSCAPING PLAN



PLANT SCHEDULE

#	Common Name	Latin Name	QTY	Size/ Remarks
1	Dwarf Yellow Willow	<i>Salix lutea</i>	5	#5 Cont.
2	Showy Mountain Ash	<i>Sorbus decora</i>	5	Low Canopy
3	Paper Birch	<i>Betula papyrifera</i>	3	65 mm Cal. Minimum
4	Highbush Cranberry	<i>Viburnum trilobum</i>	16	#5 Cont.
5	Golden Currant	<i>Ribes aureum</i>	14	#5 Cont.
6	Red Berried Elder	<i>Sambucus racemosa</i>	9	#10 Cont.
7	Red Osier Dogwood	<i>Cornus stolonifera</i>	15	#5 Cont.
8	Saskatoon	<i>Amelanchier alnifolia</i>	10	Clump Form
9	Amur Cherry	<i>Prunus maackii</i>	3	65 mm Cal. Minimum
10	Tamarack	<i>Larix laricina</i>	5	3m Height Minimum
11	Chokecherry	<i>Prunus virginiana</i>	2	65 mm Cal. Minimum
12	Existing Lilacs and Double Flowering Shrubs Moved to New Locations		80	
13	Dwarf Mugo Pine	<i>Pinus mugo</i> 'Pumilid'	9	#5 Cont.
14	Blue Chip Juniper	<i>Juniperus horizontalis</i> 'Blue Chip'	6	#5 Cont.
15	Ligularia	<i>Ligularia stenosephala</i> 'The Rocket'	6	#2 Cont.
16	Daylily Cultivars	<i>Hemerocallis</i> cvs.	6	#2 Cont.
17	Iris Cultivars	<i>Iris germanica</i> cvs.	9	#2 Cont.
18	Karl Foerster Feather Reed Grass	<i>Calamagrostis acutiflora</i> Karl Foerster'	14	#2 Cont.
19	Elijah Blue Fescue	<i>Festuca ovina glauca</i> 'Elijah Blue'	15	#2 Cont.
20	Goat's Beard	<i>Aranus dioicus</i>	3	#1 Cont.
21	Ornamental Rhubarb	<i>Rheum palmatum</i>	6	#1 Cont.
22	Woods Rose	<i>Rosa woodii</i>	8	#5 Cont.
23	Wild Raspberry	<i>Rubus leucodermis</i>	9	#2 Cont.
24	Bog Birch	<i>Betula glandulosa</i>	8	#10 Cont.
25	Bleeding Heart	<i>Dicentra spectabilis</i>	3	#2 Cont.
26	Hosta Cultivars	<i>Hosta</i> cvs.	3	#2 Cont.
27	Bugleweed	<i>Ajuga reptans</i>	32	14 cm
28	Saline Shooting-Star	<i>Dodecatheon pauciflorum</i>	22	14 cm
29	White Waterlily	<i>Nymphaeasodolara</i> ssp.	9	#2 Cont.
30	Arum- Arrow-Head	<i>Sagittaria cuneata</i> Sheld.	7	#2 Cont.
31	Marsh Marigold	<i>Caltha palustris</i>	14	#1 Cont.
32	Marsh Cinquefoil	<i>Potentilla palustris</i>	3	#2 Cont.
33	Astilbe Cultivars	<i>Astilbe x arendsii</i> hybrids	6	#2 Cont.
34	Blue Flag Iris / Yellow Flag Iris	<i>Iris versicolor</i> / <i>Iris pseudocacorus</i>	9	#1 Cont.
35	Blue Eyed Grass	<i>Seymchium montanum</i>	11	14 cm

GENERAL NOTES:

- All existing plant material in healthy condition prior to construction will be selected and saved, then moved to new locations seen suitable on the new proposed West side planting area for planting.
- All landscape installation is to conform and exceed all Landscape Industry Standards for both hardscaping and softscaping applications.
- All planting beds will consist of no less than 15 cm or 6" of Sunpine bark mulch to maintain adequate moisture levels and to suppress weeds.
- Any plant material listed in this and other designs from the For Trees Company Ltd. is subject to substitution based on customers' requests and product availability.

STAN & JANE GRAD
 client: Box 10039, Stn Main
 Airdrie, AB
 T4A 0H4
 scale: 1 : 125
 date: NOVEMBER 2010
 drawn by: AMBERLY STROM
 checked by: GERARD FOURNIER

